

architecture is

Naim Jabbour

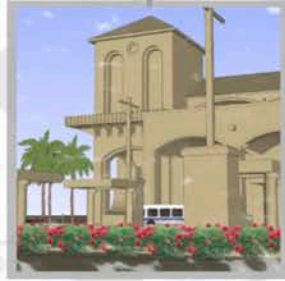
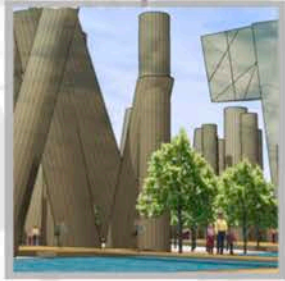
The background of the slide is a detailed, light gray architectural drawing. It features a complex network of lines, including solid and dashed lines, representing structural elements, walls, and possibly a site plan or a technical drawing of a building. The lines are drawn in a perspective that gives a sense of depth and three-dimensionality. The overall tone is technical and artistic, typical of architectural sketches.

a timeline

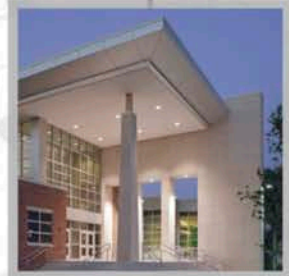
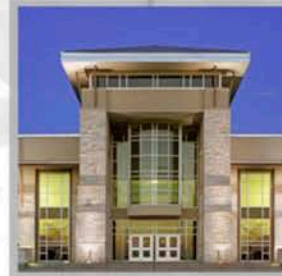
**architecture is a sequential series
of events that occur over a period
of time; it's merely a timeline
reflecting human ingenuity
and distress...**

ARCHITECTURE

a process



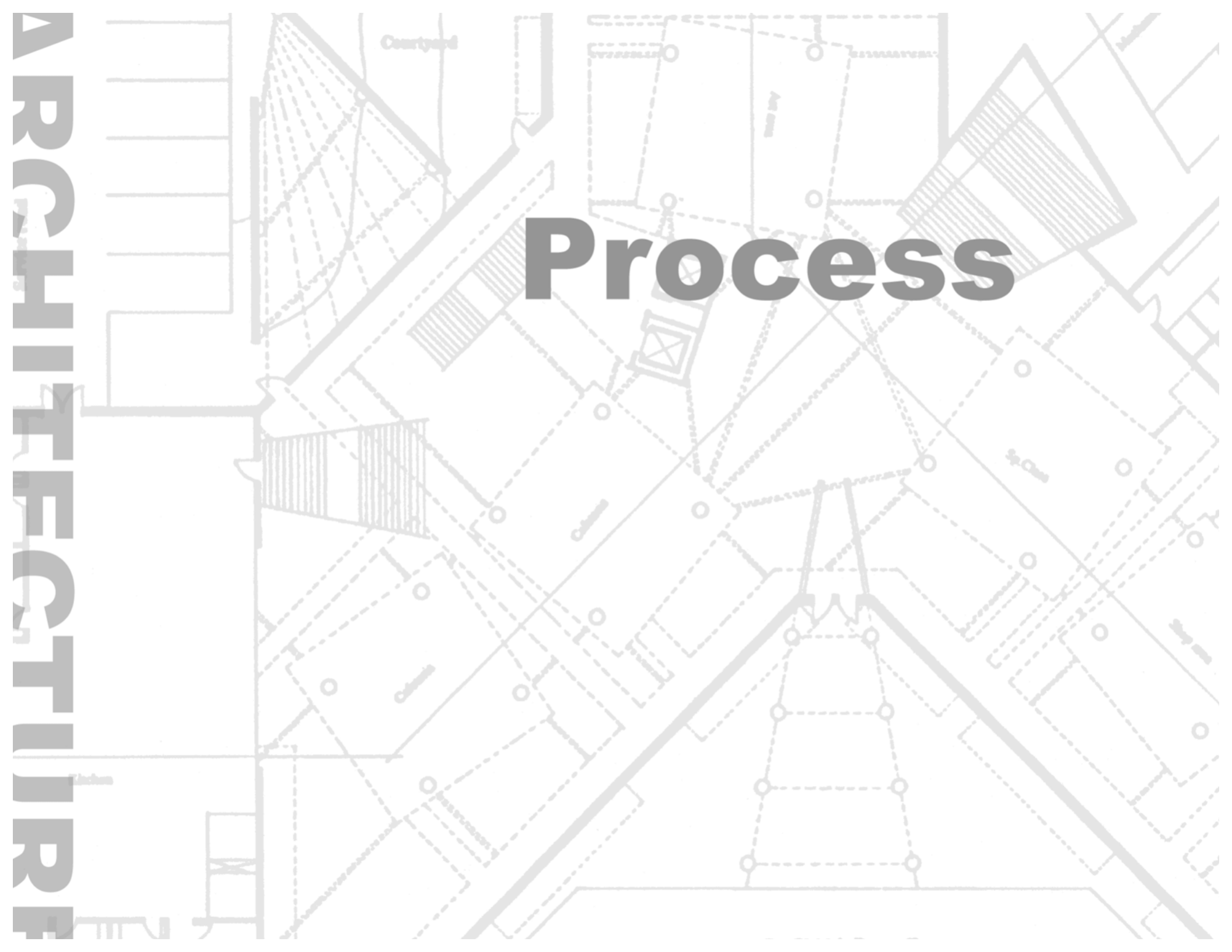
2001-2008



professional

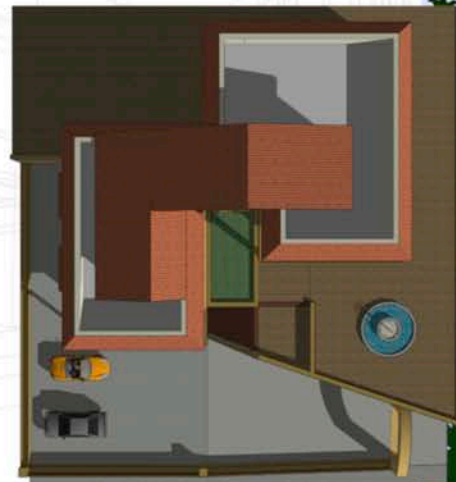
Timeline

Process

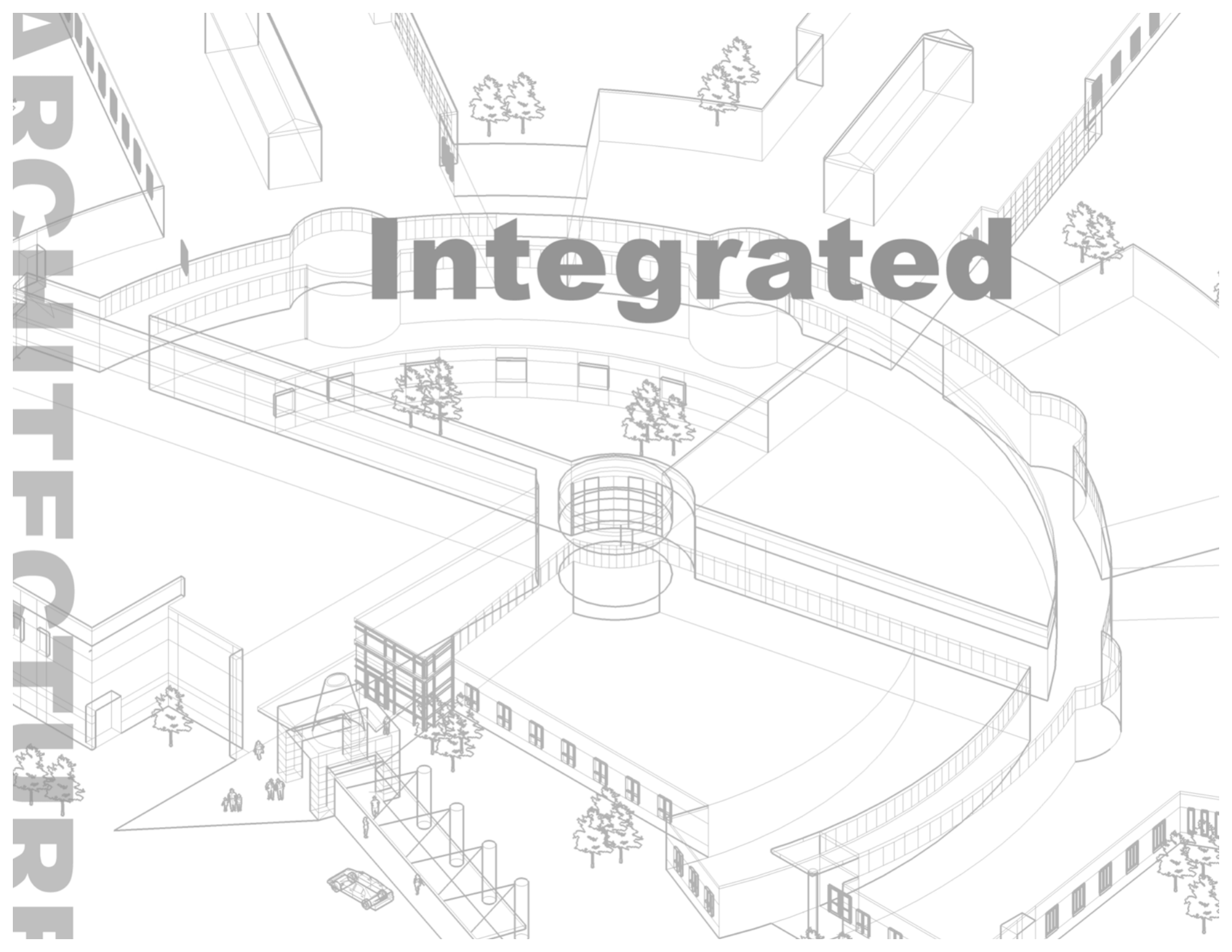


Professional

Villa, Lebanon (residential)

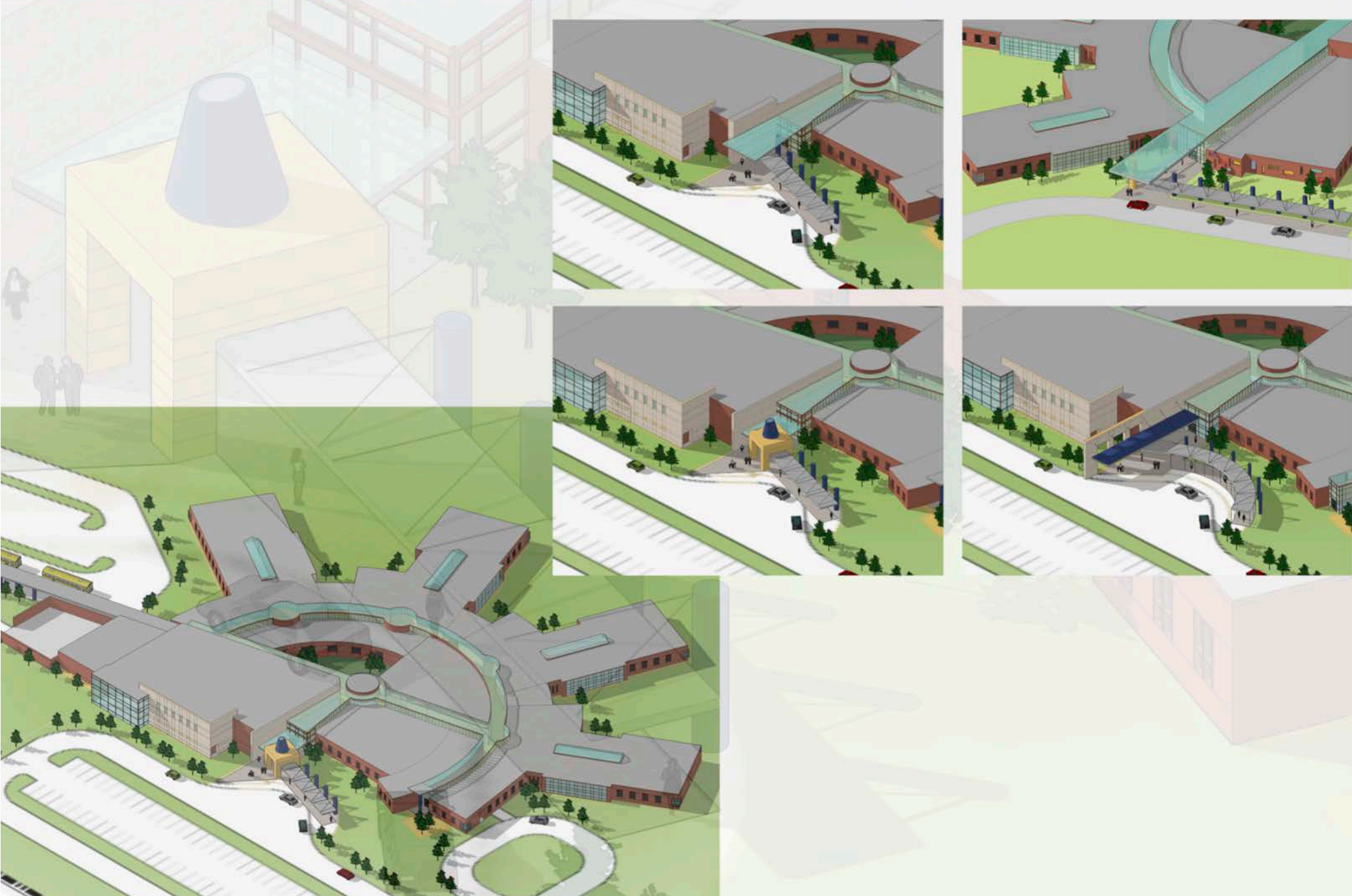


Integrated



Professional

Research academy, Houston (educational)



Sustainable



“sustainable urbanism”

**access to nature
sense of community
defined center
mixed-use development
transit oriented development
walkable community
high performance buildings
integrated infrastructure
brownfield redevelopment
open space
biodiverse corridors
increased density
social, economic, & environmental equity**



urban renewal

Responsive



Professional

Itech community development, Brownsville (urban planning)



Regenerative



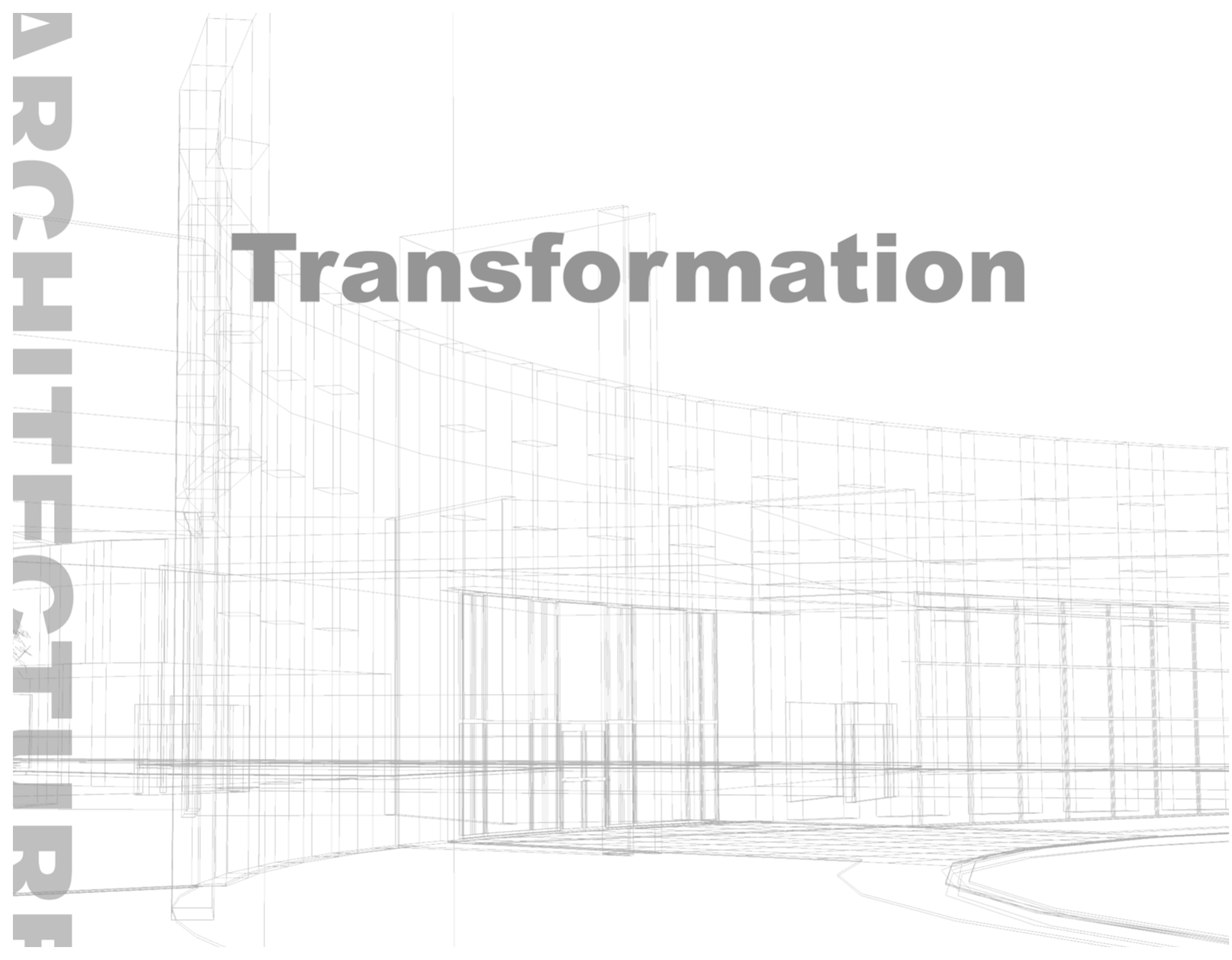
Professional

Collin County community college, Dallas (educational)



ARCHITECTURE

Transformation

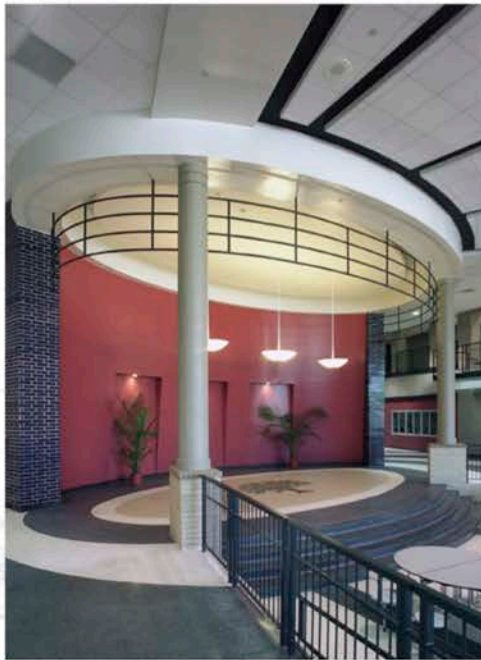


Professional

Pin Oak Middle School, Houston (educational)

urban renewal
organic Form
contemporary approach

collaborative design team effort
1200 student capacity
174,000 sf.



Site Plan



First Floor



Adaptation

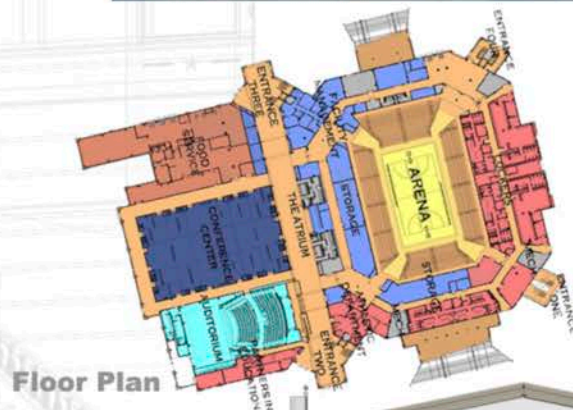


Professional

R.E. Berry Educational Support Center, Houston (sports)

classical language
community center
multi-use
grand scale

collaborative design team effort
arena/football stadium
474,000 sf.



Floor Plan

Site Plan



Spatial



Professional

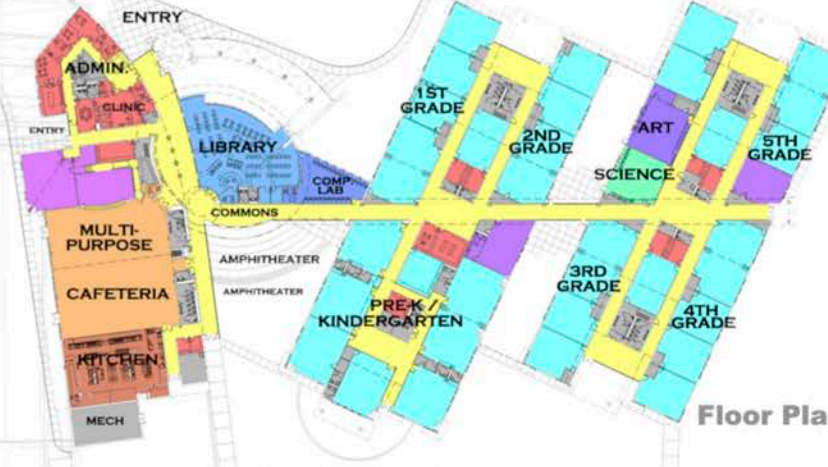
J.H. Caldwell Elementary School, Houston (educational)

contemporary approach
urban renewal
use of color
use of light

collaborative design team effort
750 student capacity
88,000 sf.



Site Plan



Floor Plan



Preservation



Professional

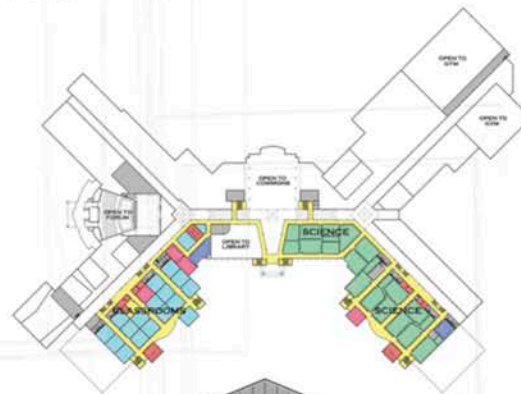
Judson High School, San Antonio (educational)

**grand entry
contemporary approach**

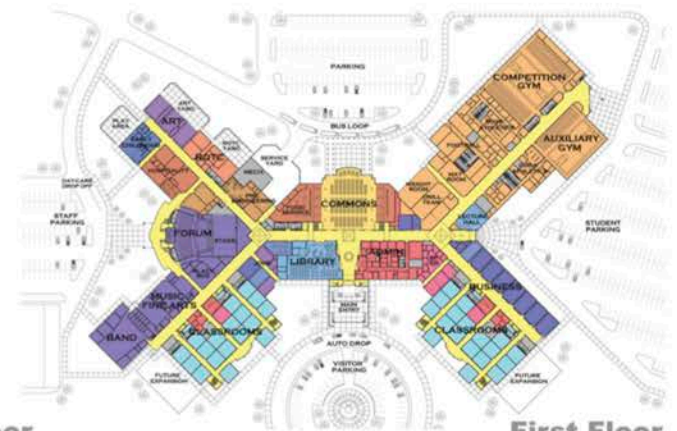
**collaborative design team effort
3000 student capacity
378,000 sf.**



Site Plan



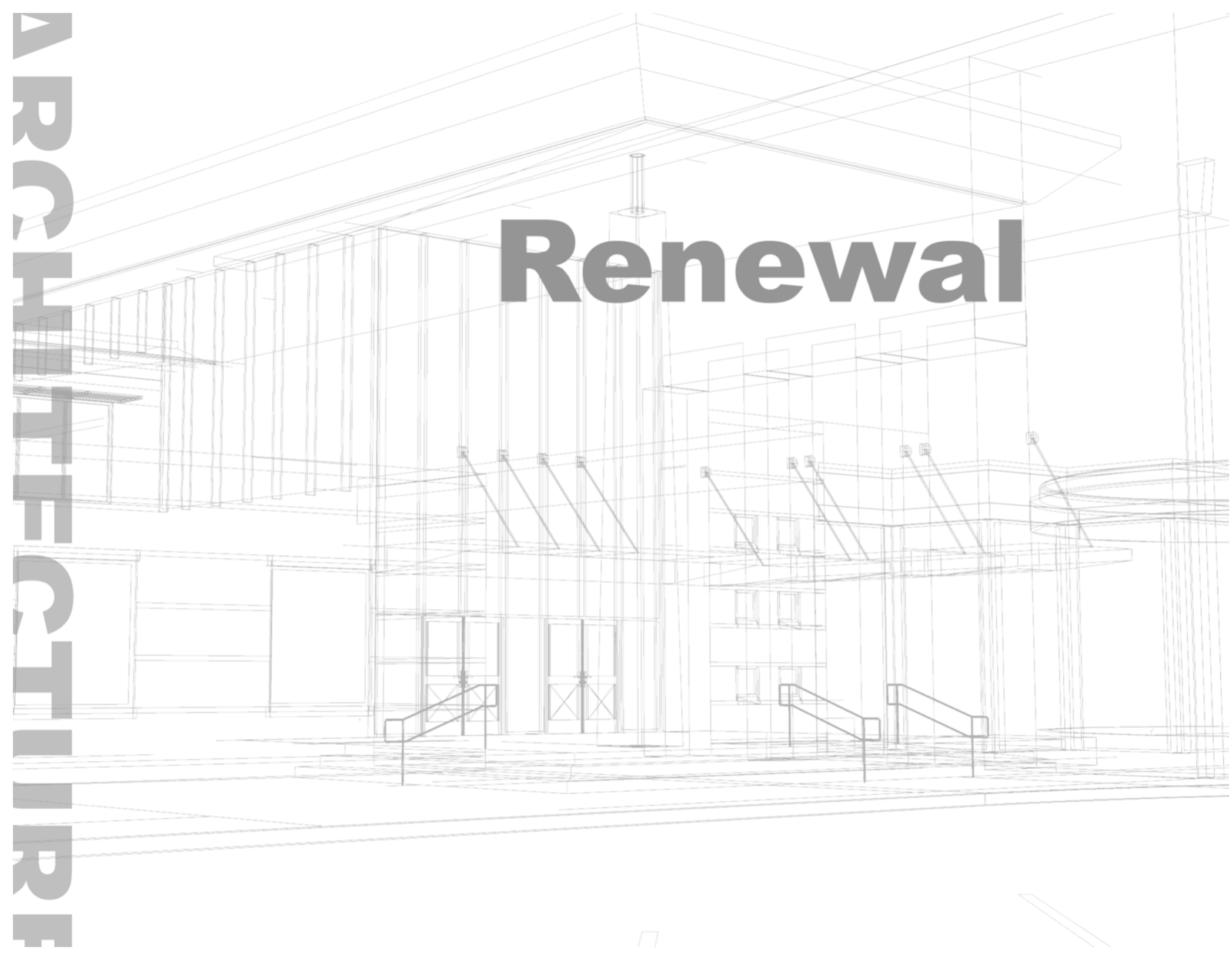
Second Floor



First Floor



Renewal

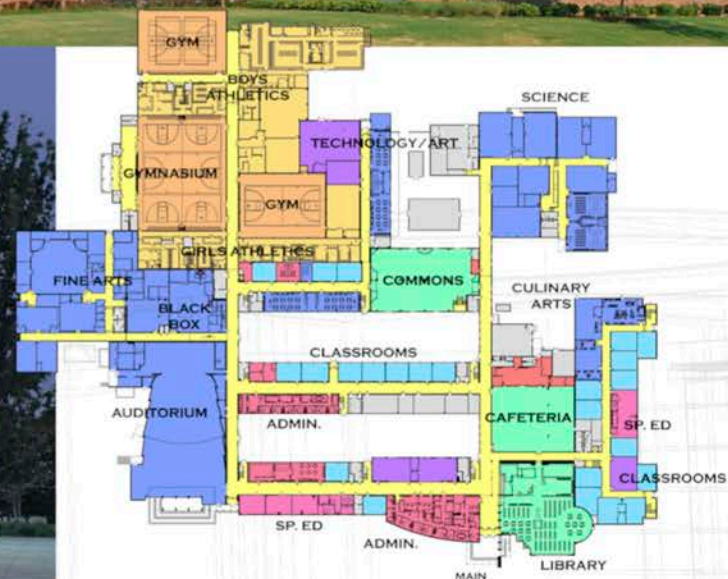


Professional

Richardson High School, Dallas (educational)

urban revitalization
community center
contemporary approach

collaborative design team effort
additions/renovations
2000 student capacity
400,000 sf.



architecture is

Naim Jabbour

Architecture is a process, a process that creates, molds, and shapes our world. I'm interested in architecture that is sustainable, symbiotic, and regenerative; architecture that captures the essence of space: architecture of experiences and events. My ultimate goal is the advancement of sustainable architecture: a process that entails promoting high performance buildings that are well integrated, energy efficient, and highly sustainable.

"I have been impressed with the urgency of doing. Knowing is not enough; we must apply. Being willing is not enough; we must do."

Leonardo da Vinci